



44 Hale Lane

Failsworth, Manchester, M35 0DN

Offers In The Region Of £150,000

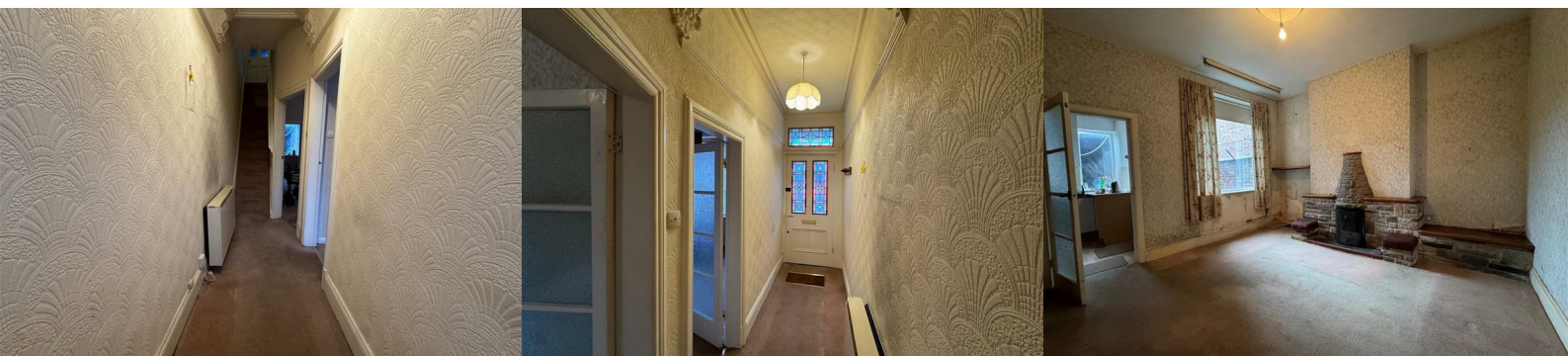


Located on Hale Lane, Failsworth, Manchester, this end terrace house presents a fantastic investment opportunity for those looking to make their mark in the property market. With two spacious reception rooms, this home offers ample space for both relaxation and entertaining. The property features two well-proportioned bedrooms, making it ideal for small families or couples seeking a comfortable living environment.

The house is in need of modernisation, providing a blank canvas for potential buyers to create their dream home. The garden at the front adds a touch of greenery, while the garage at the rear offers convenient storage or parking options.

Situated in a friendly neighbourhood, this property is within easy reach of local amenities, schools, and transport links, making it a practical choice for everyday living. With a council tax band of A, it also presents an economical option for those mindful of their budget.

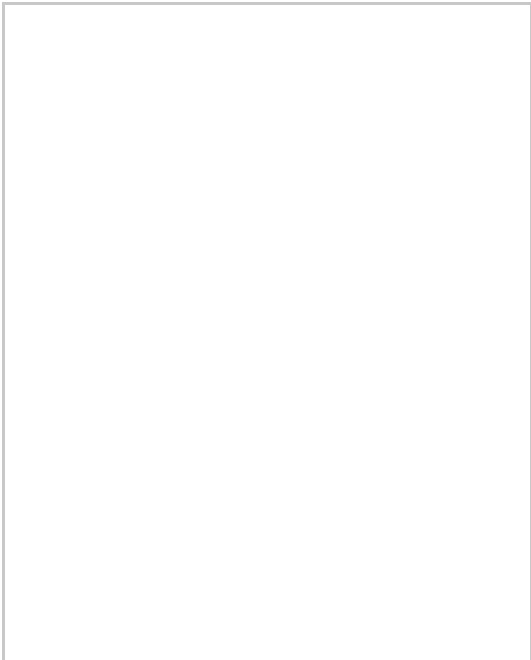
This two-bedroom terrace house is not just a home; it is a promising opportunity for those willing to invest time and effort into transforming it into a modern haven. Whether you are a first-time buyer or an experienced investor, this property is worth considering.



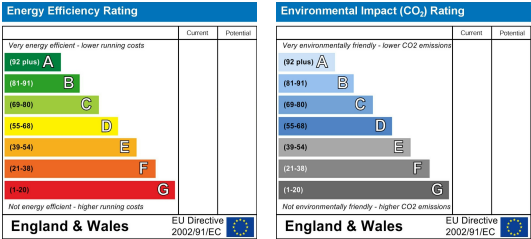
Area Map



Floor Plans



Energy Efficiency Graph



These particulars, whilst believed to be accurate are set out as a general outline only for guidance and do not constitute any part of an offer or contract. Intending purchasers should not rely on them as statements of representation of fact, but must satisfy themselves by inspection or otherwise as to their accuracy. No person in this firms employment has the authority to make or give any representation or warranty in respect of the property.

